

This map can be downloaded from the official website. Please download and view the map in advance, as access to the website will be difficult due to a lot of traffic on the race day.



Timetable of START

	6:30	7:00	7:30	8:00	8:30	9:00	9:30	10:00
Full Marathon	Male Runners	6:30~ dressing and check-in baggage, move to the start line.	7:00~ dressing and check-in baggage, move to the start line.	7:30~ dressing and check-in baggage, move to the start line.	8:30 Dressing room closed	9:00 blocks close 9:10	9:15 start	
						blocks close 9:10	9:30 start	
						blocks close 9:20	9:45 start	
Female Runners	6:30~ dressing and check-in baggage, move to the start line.				8:30 blocks close 9:00	9:10 blocks close 9:20	9:15 start	
						blocks close 9:20	9:30 start	
						blocks close 9:20	9:45 start	
720<Naniwa>Marathon	6:30~ dressing and check-in baggage, move to the start line.					blocks close 9:20	9:45 start	

Expect crowded at around dressing and baggage check-in area, please move up to the start block as soon as possible after dressing and check-in the baggage.
Dressing area can't be used for the waiting area before starting the race. We appreciate your cooperation.

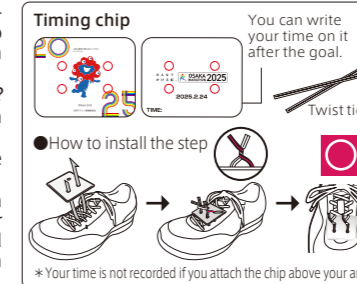
Required time to the venue from each station (on foot)

Runner	Venue	Recommended Closest Station	Estimate Time
Full Marathon	OSAKA-JO HALL	JR Osaka Loop Line	Osaka Jo Koen Sta. (Exit No.2)
		Osaka Metro Nagahori Tsurumi Ryokuchi Line	Osaka Business Park Sta. (Exit No.1)
		JR Osaka Loop Line/ Keihan Line	Kyobashi Sta. (From the bridge "Osaka-jo Kyobashi Promenade")
720 <Naniwa> marathon	Arround WW Hall	Osaka Metro Chuo Line/ Nagahori Tsurumi Ryokuchi Line	Morinomiya Sta. (Exit No.3-A, No.3-B)
		JR Osaka Loop Line	Morinomiya Sta. (Exit North)
			Approx. 7 mins.

No parking lot. Please use public transportation to the venue.
Not able to access to the starting block from Osaka Metro Tanimachi 4-chome Station on the raceday.

CHECK LIST a day before

- Did you tie the timing chip on your shoes? See figure on right (If you don't know how to put it on, please come to the information on the race day.)
- Did you wear the Security band on your wrist?
- Did you pin the athlete bib on the uniform for the race?
- (Applicable person only) Did you stick the baggage sticker on your baggage?
- Are you feeling well? Please refrain from participating if you have symptoms of fever or are feeling unwell. We also recommend that you bring your health insurance card in case of unforeseen conditions.
- Please prepare cash or a transportation IC card just in case. (Required for those who retire and are unable to board the pick-up bus to return to the finish point by public transportation.)
- (If the weather forecast is for rain) Please bring a folding umbrella or other rainy gear, long umbrellas cannot be checked in baggage. As rain and cold protection, please be prepared to keep you warm with a cap, poncho, arm warmers, gloves, Vaseline, etc.

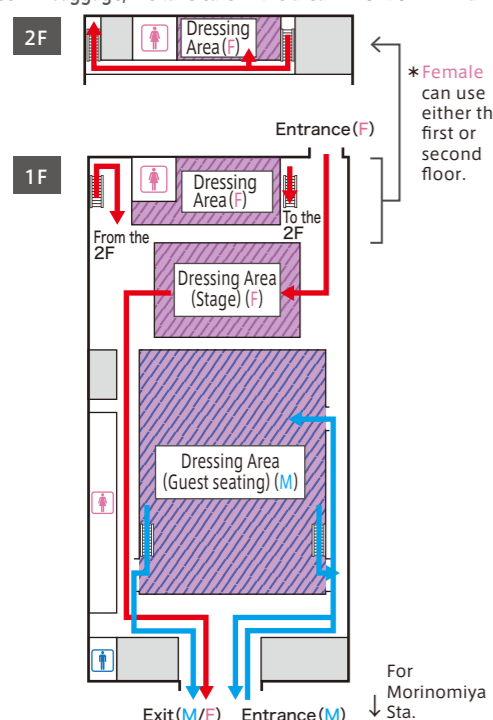


Dressing and Baggage check-in area

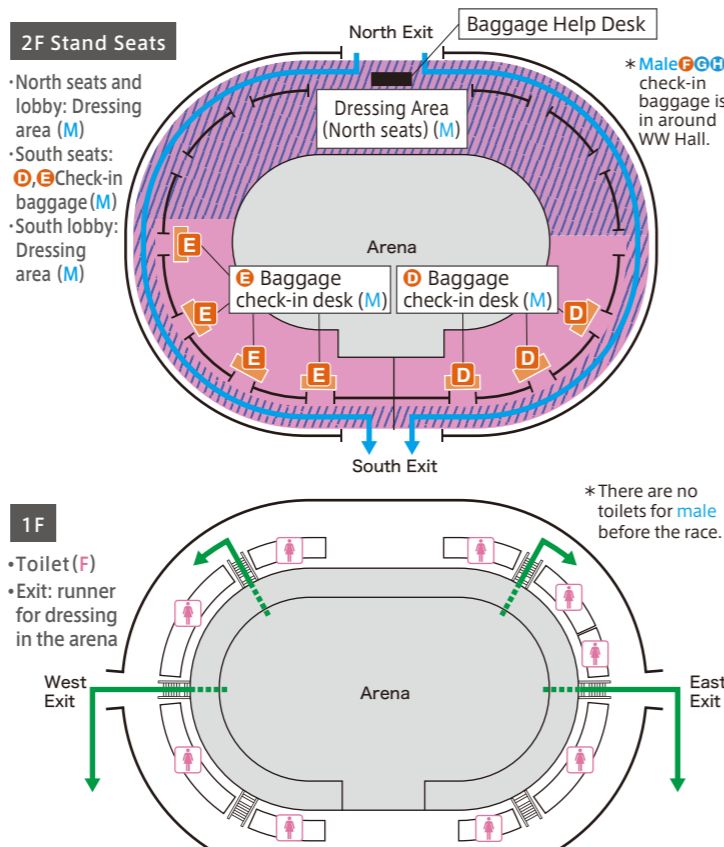


WW Hall 720<Naniwa>Marathon

For check-in baggage, we take care in the area in front of WW Hall.



OSAKA-JO HALL Full Marathon



Organizers: Osaka Prefectural Government, Osaka City, Osaka Athletics (OA)
Co-organizers: The Yomiuri Shimbun, The Mainichi Newspapers Co., Ltd., Japan Broadcasting Corporation (NHK), Japan Association of Athletics Federations (JAAF)
Managing Organization: Osaka Athletics (OA)

Inquiry

Osaka Marathon Call Center ☎ 072-886-8930 support@osaka-marathon.com

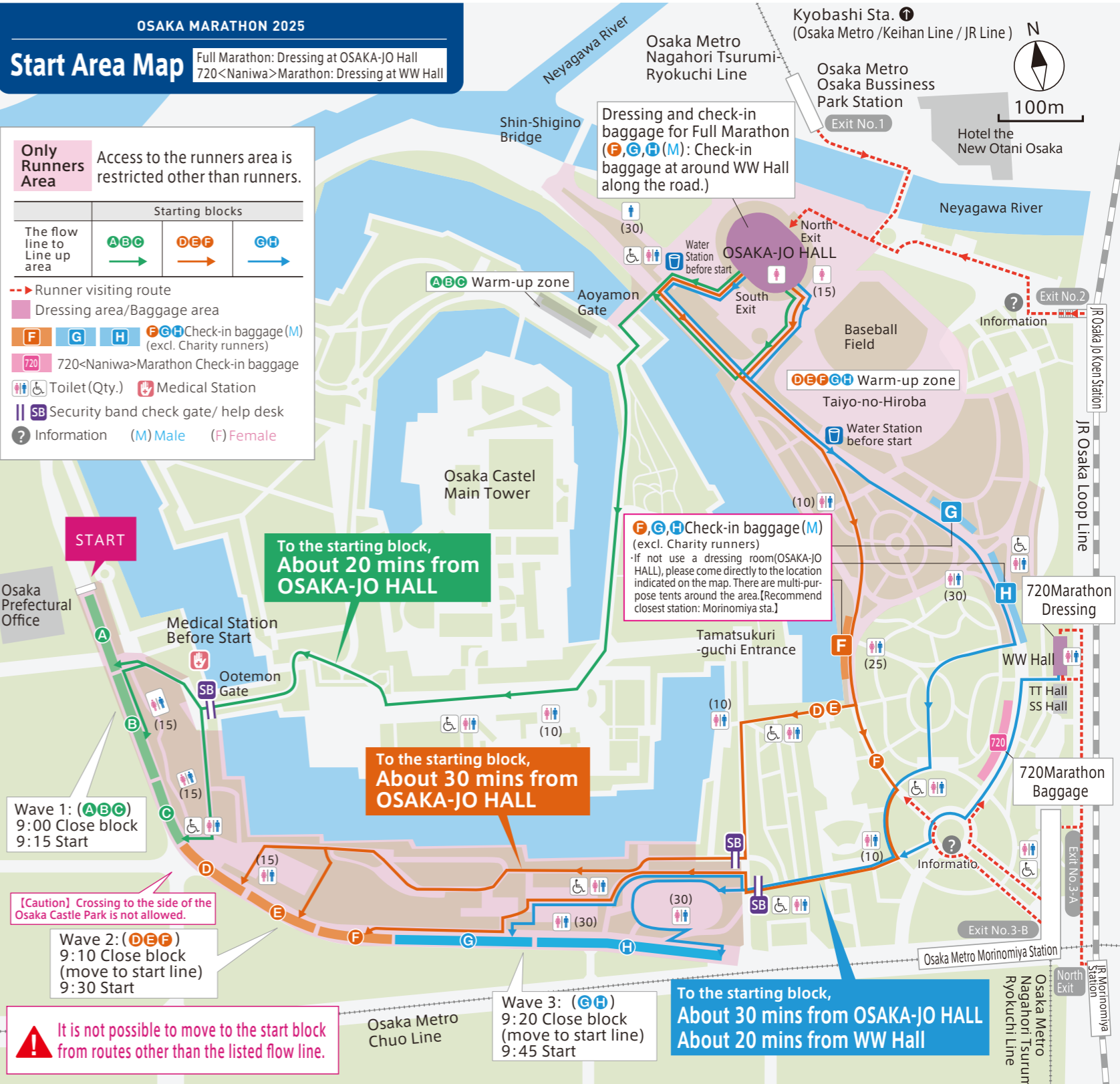
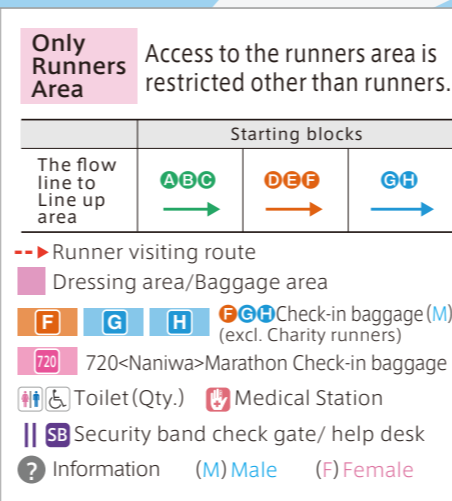
Office Hours	Weekday, Until Feb 21 and after Feb 25	10:00~17:00
	Sat. Feb 22	10:00~19:30
	Sun. Feb 23	9:00~18:30
	Mon. Feb 24	5:00~17:00

Various information about the race, we will be announced at any time race official website. <https://www.osaka-marathon.com/2025/en/>

OSAKA MARATHON 2025

Start Area Map

Full Marathon: Dressing at OSAKA-JO Hall
720<Naniwa>Marathon: Dressing at WW Hall

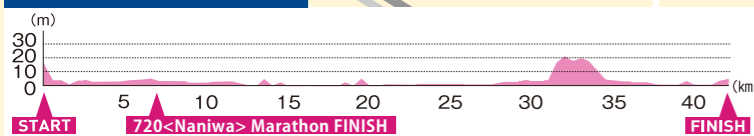


Street smoking across the Osaka city is prohibited starting Jan 27th, 2025.

Course MAP

- Marathon Course
- 720<Naniwa> Marathon Course
- (Run) Course
- (Wheelchair) Course

Course elevation MAP



(Follow doctor's directions during the race)
If you are told to stop running by a doctor, you should do so immediately.
 If you are told that you have a health issue at the Medical Station or if you feel uncomfortable with your chest, please go to the hospital after the race for the sake of yourself and someone who cares about you.

Water supply/Food service			
Point	Water	Sports drink	Juice
Start	○	○	
6.0km (x2)	○	○	
7.8km	○	○	
10.0km	○	○	
12.8km	○	○	
15.3km	○	○	
18.0km	○		Banana, Candy, Mini Croissant (Chocolate), Takoyaki Sweet, Yokan, Salt charge tablet
20.4km	○		
22.6km	○		Banana, Candy, Mini Croissant (cream), Salt charge tablet, Pickled plum, Thin cookie, Japanese cake, Yokan
25.3km	○	○	
27.6km	○		Banana, Candy, Chocolate snack, Salt charge tablet
31.1km	○	○	
32.8km	○		Maido-Aid (Osaka Local food including Takoyaki)
35.8km	○	○	
37.6km	○		Candy, Japanese cracker, Salt charge tablet, Madeleine, Bean Sweets (black soy bean/peanuts)
40.8km	○	○	
After finish full marathon			Onion soup, Sweet rice juice, Protein chicken stick, Japanese sweets, Fried bean snacks, Instant noodles, Sports drink
After finish 720 <Naniwa> marathon			Banana, Sweet rice juice, Sports drink

Osaka Marathon Runs Green, Be a saver for the earth!
 Please recycle paper cups!

Flash Time Report (RUNNERS' I)

 FREE Provided OPTAGE

At the Osaka Marathon, runners can be searched by number card or runner name. Further you can see animation viewing after pass marathon start point, each 15km-25km-35km check points and marathon finish point. You can also check estimated passing time and the current location of runners registered in advance the service.

[PC/Smartphone]
<https://runners-eonet.jp/>
 *It is flash report and also unofficial time.
 ■ Available on Sat.22 Feb 2025- Mon.24 Mar 2025
 *Videos will be available starting Mon.24 Feb 2025.
 *720<Naniwa>-marathon is not eligible.

Finish Area

- Please do not stop after finish and get runner's service in order of number in the map.
- You can download the race result on the official website.
- Day record certificate (including gross & net time): Mon, Feb 24 around 22:00.
- Official record certificate (including gross & net time, information on ranks and rap time): 1 week after the race

Osaka Castle Park (Full Marathon)

Flow chart after Finish

- Finish bag
- Sports Drink
- Finish Food (Sweets, etc.)
- Completion Medal
- Finisher's Towel
- Finisher Food (Onion Soup)
- Baggage counter/Dressing area

Only Runners Area Access to the runners area is restricted other than runners.

Runner's flow line, Dressing/Baggage area, Baggage check-in desk (M) (excl. Charity runners), Toilet, Medical Station, Photo Location

Nakanoshima-Park (720<Naniwa> Marathon)

Flow chart after Finish

- Sports Drink
- Banana
- Finisher's Towel
- Baggage counter
- Dressing area

Toilet *Please respect manners, and use designated toilet.

Point	Place	Quantity	Point	Place	Quantity
0.5km	Sidewalk on the north side of the Keihan Line East Exit intersection	20	23.9km	Matsu-dori Park	12
1.8km	Inside of Kema Park (South riverside at the east of Sakuranomiya Bridge)	20	25.7km	Minami-biraki Park	10
3.4km	Around Nagara exit/entrance of Hanshin express toll road	7	26.5km	Osaka Municipal Sakae elementary school	10
6.2km	South Tenma Park (east riverside at the north of Tenjinbashi Bridge)	20	27.9km	In front of OCAT	10
7.5km	Osaka City Hall	29	29.5km	Osaka Municipal Koudu elementary school	9
9.0km	Mitsubishi UFJ Trust and Bank of Osaka headquarter	16	30.5km	Aizen Park	10
11.9km	Minato machi River Place	14	31.5km	Ikutama Park	12
13.6km	Taisho-bashi bridge intersection	11	33.0km	Osaka International House Foundation	12
14.4km	Matsushima Park (North)/Matsushima Youth Park	12	35.1km	Ikuno ward office	8
16.4km	Osaka Prefectural Ichioka high school	15	36.6km	Nakagawa Nishi Park	2
17.2km	Hello work Osaka West (parking lot)	8	38.2km	Seven Eleven Osaka Nakamoto 5th street	5
18.7km	Matsushima Park(South)-Matsushima Baseball field	10	39.5km	Nakahama sewage plant	5
21.0km	(KK) KEY BOARD	9	40.9km	Osaka Trucking Association	2
22.7km	Lawson Nishinari Naka-biraki 3rd street	13			

Medical station List

Point	Place	Point	Place	Point	Place
0 km	Medical Station Before Start	22 km	Naniwa Minami Park Meeting Hall	35 km	Ikuno Branch, Osaka Municipal Fire Department
7 km	Osaka City Hall	24 km	Matsu-dori Park	37 km	Nakagawa Nishi Meeting Hall
12 km	Hozan tool Industrial Co.,Ltd. Parking lot	26 km	Minami-biraki Park	39 km	Nakahama sewage plant
14 km	Matsushima Park (North)/Matsushima Youth Park	28 km	In front of OCAT		OSAKA-JO Hall parking lot
16 km	Osaka Prefectural Ichioka High School	30 km	Aizen Park		Japanese Archery Field (In Osaka Castle Park)
18 km	Matsushima Park(South)-Matsushima Baseball field	33 km	Osaka International House Foundation 1F Gallery		Citizen's Forest

* Basically, at these Medical stations medical staffs will apply only emergency first aid for injuries and illnesses during marathon and they assume no responsibility whatsoever for subsequent damages or problems in serious case.
 No cooling treatment at the medical station.

⚠ Street smoking across the Osaka city is prohibited starting Jan 27th, 2025.